

FREEHOLD



Bungalow - Semi Detached

**JUNE AVENUE, THURMASTON,**

**LEICESTER, LE4 9TE**

**£190,000**

**FEATURES**

- Semi Detached Bungalow
- Entrance Hall
- Kitchen
- Bathroom & Separate W.C
- Upgrading Works Required
- Through Lounge
- One Bedroom
- Rear Garden



**SETHS**

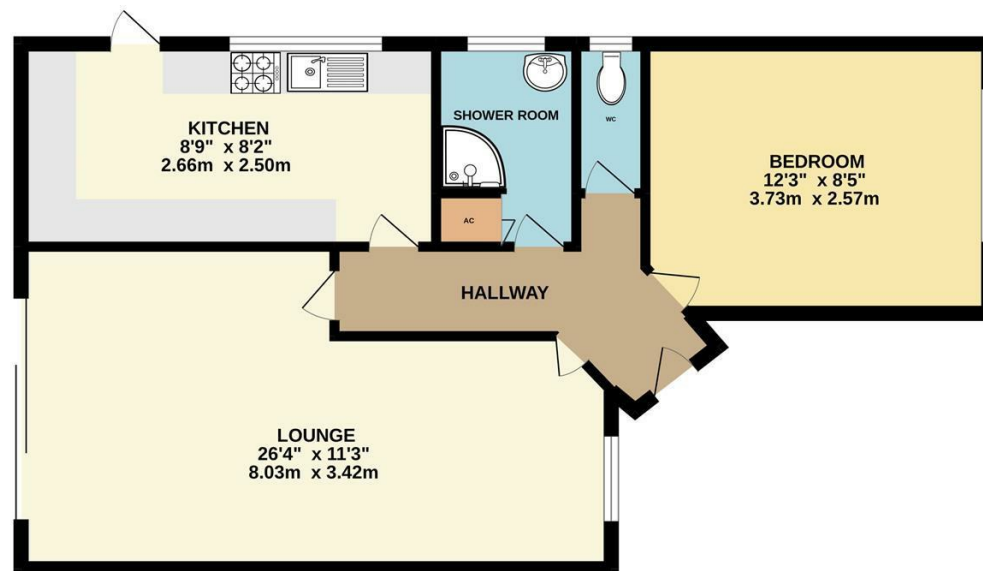
# 1 Bedroom Bungalow - Semi Detached located in Leicester

\*\*\* UPGRADING WORKS REQUIRED \*\*\* One bedroom semi detached bungalow situated in the popular Thurmaston area.

Briefly the accommodation comprises, entrance hall, through lounge, kitchen, one bedrooms, bathroom and separate w.c.. The property benefits from a driveway and a single garage.

\*\*\* NO CHAIN \*\*\*

GROUND FLOOR



Whilst every attempt has been made to ensure the accuracy of the floorplan contained here, measurements of doors, windows, rooms and any other items are approximate and no responsibility is taken for any error, omission or mis-statement. This plan is for illustrative purposes only and should be used as such by any prospective purchaser. The services, systems and appliances shown have not been tested and no guarantee as to their operability or efficiency can be given.  
Made with Metropix ©2022

Call us on  
0116 266 9977

[sales@seths.co.uk](mailto:sales@seths.co.uk)  
[www.seths.co.uk](http://www.seths.co.uk)

Council Tax Band  
**B**

Energy Efficiency Rating		Current	Potential
<i>Very energy efficient - lower running costs</i>			
(92 plus) <b>A</b>			
(81-91) <b>B</b>			
(69-80) <b>C</b>			
(55-68) <b>D</b>			
(39-54) <b>E</b>			
(21-38) <b>F</b>			
(1-20) <b>G</b>			
<i>Not energy efficient - higher running costs</i>			
<b>England &amp; Wales</b>		EU Directive 2002/91/EC	

Agents Note: Whilst every care has been taken to prepare these particulars, they are for guidance purposes only. All measurements are approximate and are for general guidance purposes only and whilst every care has been taken to ensure their accuracy, they should not be relied upon and potential buyers are advised to recheck the measurements.

